

AIR HEAT CUTTERS

- Double-heater can set temperature in wide range between 70~200°C to fit each resin gate at the most suitable temperature.
- 3 models of replaceable blades are available to suite various kinds of gate cutting jobs.

MACHINE-FITTING TYPE

AH Type Transformer HTR100W



● Digital Indication type transformer

The digital indication type transformer (HTR100W) must be used with these Double-heater type Air Heat-Nippers.

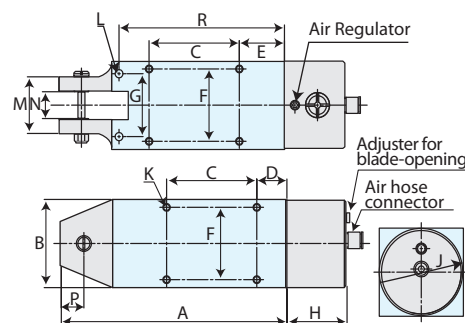


HTR100W (for AH20,AH30)

AH type specification

Model (less blade)	Weight (g)	Air consumption (cm ³ /stroke)	Cutting capacity (φmm)	Dimensions (mm)															
				A	B	C	D	E	F	G	H	J	K	L	M	N	P	R	
AH20	505	262	6.0	109	45	40	19	24	36	30	40	44	M4D8	5.3	26	12	9	81	
AH30	930	621	7.0	150	56	60	20	30	46	40	40	55	M5D11	5.3	36	17	15	110	

Model	Input power	Output power	Length of cord	Weight	Adjustment range of temperature
HTR100W	AC100V	64VA(MAX)	1.85m	1,200g	70~200°C



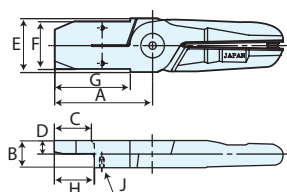
HEATER



W-19W

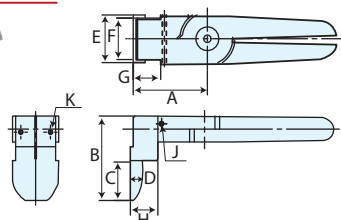
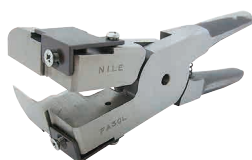
BLADE

Straight type FA20S, FA30S



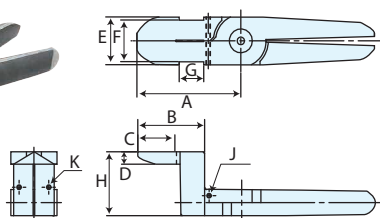
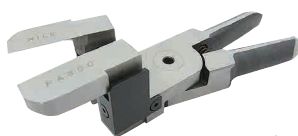
Model	Blade	A	B	C	D	E	F	G	H	J	K
AH20	FA20S	70	12	20	6	36	23	22	22	M3D5	—
AH30	FA30S	66	17	25	8.5	35	31	51	27	M3D5	—

L type FA20L, FA30L



Model	Blade	A	B	C	D	E	F	G	H	J	K
AH20	FA20L	36	49	20	5	23	19	18.5	18	M3D6	M3D8
AH30	FA30L	50	55	25	8	31	27	18.5	18.5	M3	M3D8

Crank type FA20C, FA30C



Model	Blade	A	B	C	D	E	F	G	H	J	K
AH20	FA20C	55	37	20	5	23	19	16.5	30	M3D6	M3D8
AH30	FA30C	70	45	25	8	31	27	16.5	41.5	M3	M3D8